

INFRASTRUCTURE



USHAPE DRAIN



RCC DRAIN COVER



EGG SHAPE DRIAN

ALL KINDS OF PRECAST/PRE-STRESSED CONCRETE PRODUCT MANUFACTURES

Ready Made Pre-stressed Boundary wall | RCC Manhole Cover | Kerb Stone | RCC Paver Block
RCC Ready Made Toilted | Precast Drain & Covers | Garden benches | Half round Pipe

U-Shape Drain

Egg Shape Drain

Ventech

Pre-Stressed & Precast

Improves
Looks, Strength & Re-Installation
SAVE MONEY & TIME



Ventech Infra Projects Pvt. Ltd.

AN ISO - 9001-(2016) TQV COMPANY

Mfg. Pre-Stressed-Precast

Office Address:

117/Q/45 L.G.F.,Envirad Complex,
Sharda Nagar, Kanpur, 208025

Factory Address:

Opposite Chaura Railway Station,
Kalpi Road, Village Kariyapur,
Kanpur Dehat

☎ 9005849003 (Ankit Katiyar)

☎ 9795362722 (Anil Rajput)



Ventech Infra

Projects Pvt. Ltd.



Welcome to...

VENTECH INFRA PROJECTS PVT. LTD.

About us

Ventech is the first and the largest independently owned pre-stressed-precast concrete companies in Uttar Pradesh. We design and manufacture standard and custom precast concrete products to meet large-scale infrastructure demands for low-cost housing, on-site waste water, and sewage applications.

by increasing quality, decreasing costs, expanding our capabilities and strengthening customer relationships Ventech will provide unsurpassed customer value, becoming the only logical choice for pre-stressed precast concrete foundation, columns, beams, wall panels, slabs and drains etc.

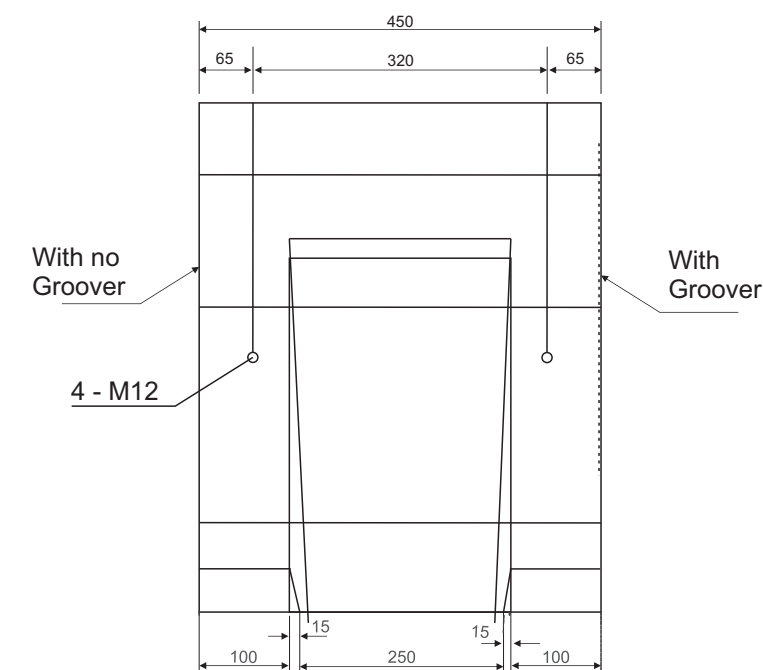
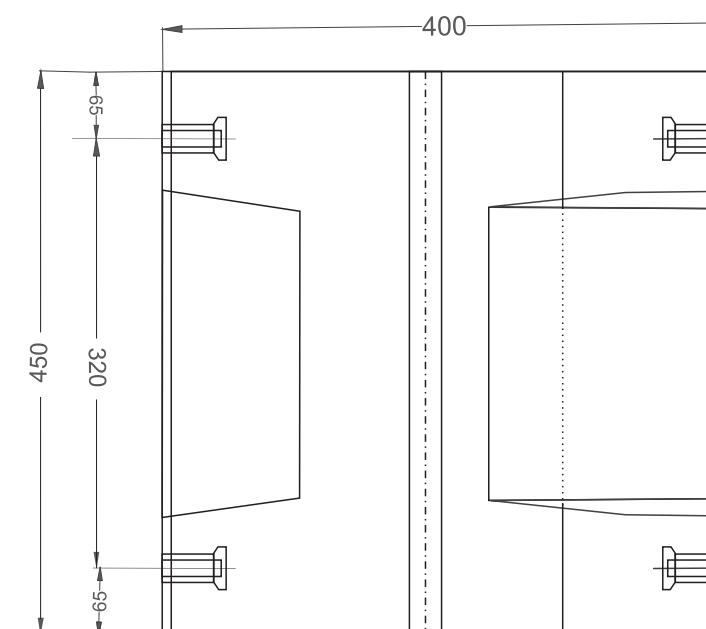
The VENTECH Way

We believe in...

- Safety and quality above all.
- Creating a positive customer experience
- Acting with integrity
- Treating people with respect
- Nurturing a spirit of innovation
- Always finding a better way.

Our Advantages

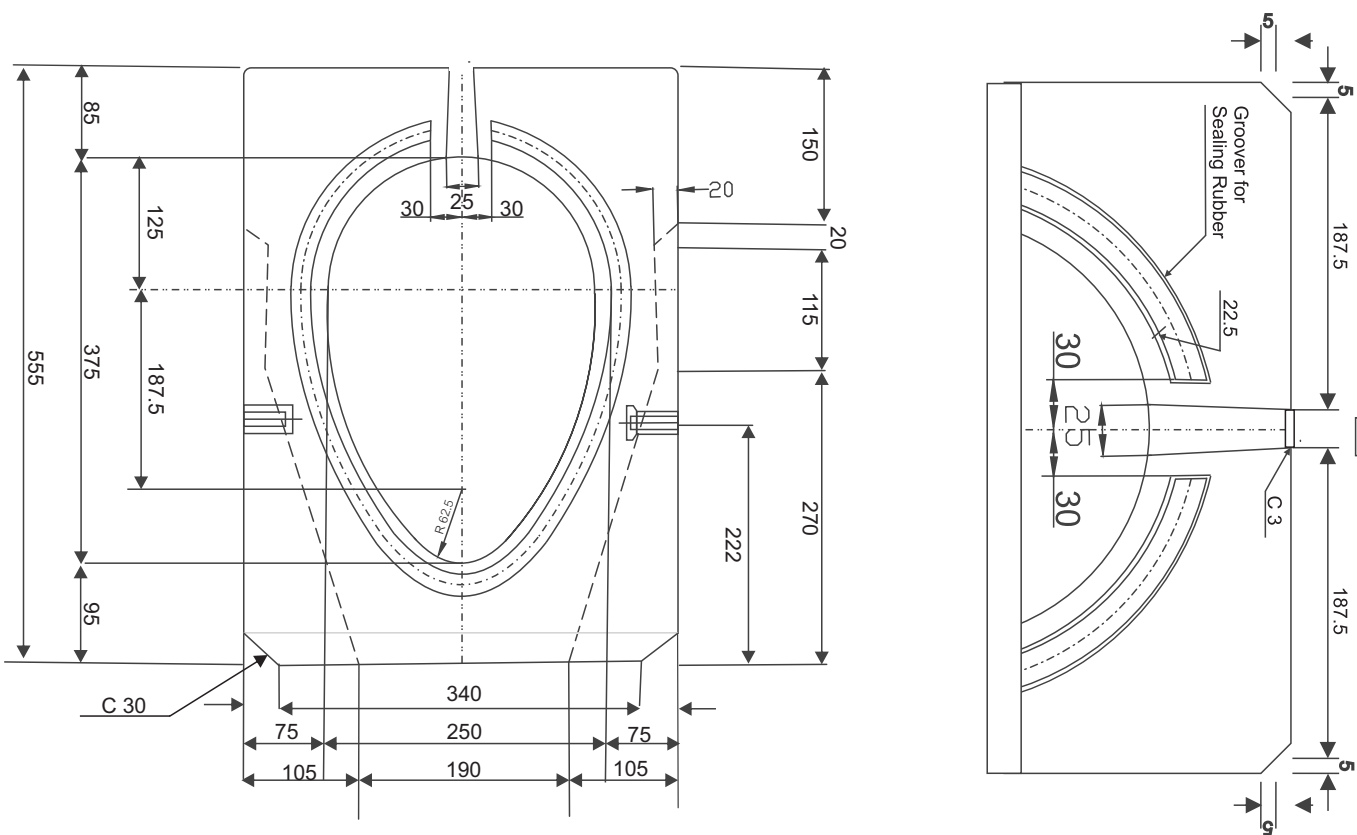
- Durability
- Economy
- Long Spans/Heavy Loads
- Speed of Construction
- Aesthetics
- Quality Assurance



Egg Shape Drain



TECHNICAL DETAIL



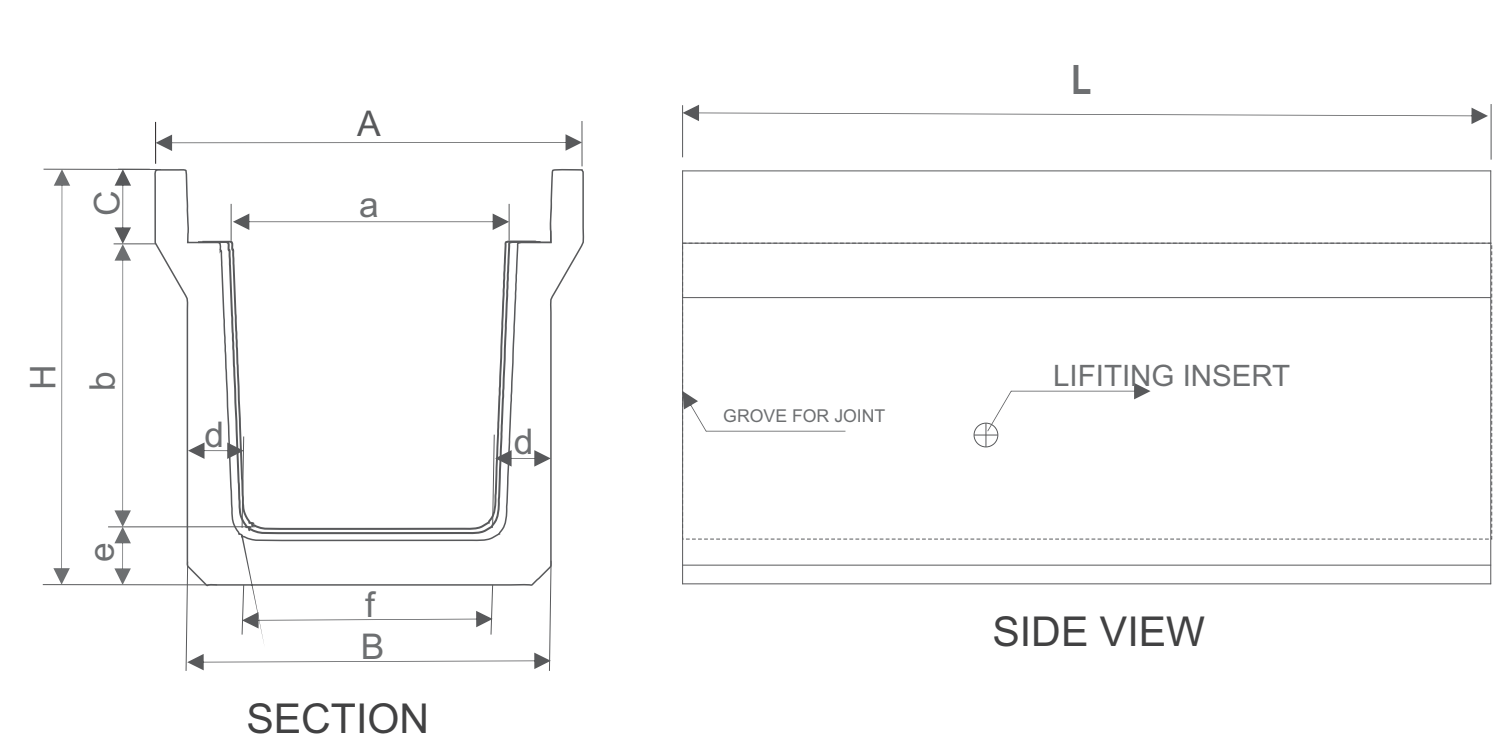
Ventech Prestress & Precast Concrete Advantages



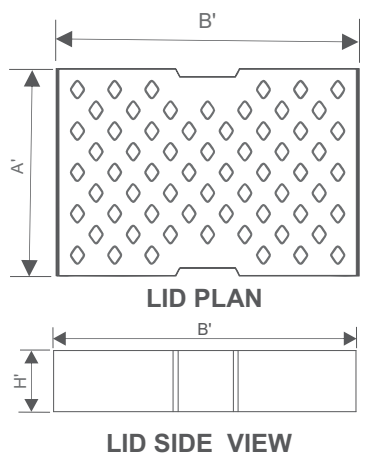
U-Shape Drain



TECHNICAL DETAIL



Size (mm) BXH	Dimensions of U-shepe drain (mm)										Appx. Weight (kg)
	Æ	A	B	H	a	b	c	d	e	f	
250X250	2000	460	360	405	250	250	90	65	65	230	289
300X300	2000	520	420	465	300	300	95	70	70	280	435
450X450	2000	700	590	660	450	450	130	80	80	430	657
600X600	2000	860	730	835	600	600	145	90	90	550	890
750X750	2000	1050	890	1000	750	750	150	100	100	690	1200
900X900	2000	1200	1070	1170	900	900	160	120	120	830	1646



Size fo Drain (mm)	Dimensions of Lid (mm)			Appx. Weight (kg)
	ÀV	B'	H'	
250X250	500	350	90	37
300X300	500	410	95	49
450X450	500	510	130	87
600X600	500	732	145	125
750X750	500	902	150	158
900X900	500	1052	150	187